

HR Rely for MGAA

Fixed fee employment, HR and advisory support for employers

Weightmans is a national leading provider of legal insurance solutions with international reach via Insurance Law Global and our extensive informal network.

- Working together with MGAA we will be providing exclusive offers for members like you.
- We have a proven track record in getting the right results for our MGA clients across personal injury, property, financial lines and specialty - from effective coverage and claims strategies and policy wording advice, through to successful approaches for prevention, defensibility and overall claims resilience to drive down indemnity spend.
- As a full-service law firm we support MGAs on their commercial legal requirements too – including employment, corporate, real estate, cyber and commercial litigation.

We can provide, telephone, email, or face to face advice provided by zoom/teams to specified contacts. Our focus is on providing businesses of all sizes with pragmatic and strategic advice that will not only address your concerns but will also help you achieve your business objectives.

Our HR Rely Packages



Fixed fee employment, HR and advisory support for employers

HR Rely

What is included?

- A dedicated team of advisors to provide up to 15 hours of support to one member organisation user
- Annual review meeting with dedicated client relationship manager
- Access to the HR Rely members' library
- Regular updates and invites to HR Rely member events
- Opportunity to purchase additional support in 5 hour blocks
- Opportunity to purchase tribunal insurance OR Fixed-fee tribunals support
- Fixed-fee support for specific services, such as immigration, training, pensions.

Exclusive discounted pricing for MGAA members

Packaged hours

- 5hrs = £950
- 10hrs = £1900

HR Rely+

What is included?*

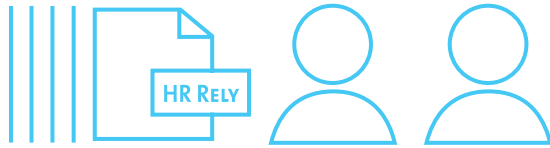
- Unlimited support from dedicated team of advisors*
 - Up to 3 nominated HR Rely member organisation users
 - Review meetings with dedicated client relationship manager
 - Health check of a standard contract and core HR policies**
 - Access to the HR Rely online members' library and website
 - Regular updates and invites to HR Rely member events
 - Opportunity to purchase tribunal insurance OR fixed-fee tribunals support
 - Opportunity to purchase fixed-fee support for specific services, such as immigration, training, pensions
- * If Advice+ package is purchased
- ** Core HR policies: disciplinary, grievance, bullying & harassment, equality & diversity, maternity, sickness management, flexible working, whistleblowing, redundancy, performance management and capability.

Exclusive discounted pricing for MGAA members

HR Rely Advice+ (unlimited) package

Employees:

- Up to 200 = £5000
- Up to 500 = £7000
- Up to 1,000 = £10,000
- Over 1,000 - POE



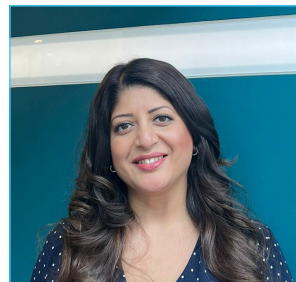
HR Rely Members' Library

- All members will have access to the online HR Rely members' library which provides downloadable guidance and templates on a range of topics as well as model letters and example policies.
- Members will also receive regular updates and invites to HR Rely member events.

“The team at Weightmans work as an extension of our business. Their advice is always timely, practical and bespoke to our needs. We would highly recommend them to other organisations.”

Helen Farley

HR and Health & Safety Manager, Hydrobolt Group



Seema Champaneri

Commercial Lead – HR Rely

Telephone:

0345 073 9900

Email:

seema.champaneri@weightmans.com

Website:

hrrely.weightmans.com